

Three-phase toroidal fixed transformer

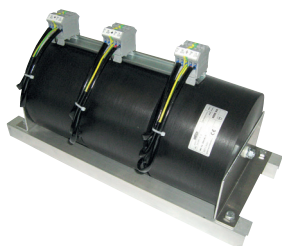
Three-phase isolating transformer

The three-phase toroidal fixed transformer is used for protective separation between both alternating voltage networks (through double or reinforced insulation, optimal: shielding winding).

Advantages

- Use in contamination levels of up to PD3
- Protection class IP 00 to IP 54 (with terminal boxes)
- Shock and vibration-resistant design (upon request)
- Use of high-quality cores for the minimisation of power loss
- Flexible adjustment to customer specifications (modified voltage ratio, voltage taps, performance values, high level of protection, temperature monitoring, additional windings and alternative switch groups possible)
- Optional: All materials upon request in accordance with REO UL-System E251513
- Standards: EN 61558

Three-phase toroidal fixed transformer



Technical data

Three-phase toroidal fixed transformer*	
Rated power	600 - 15.000 VA
Input voltage	3 x 400; 3 x 230 V
Output voltage	3 x 230; 3 x 400 V
Rated current	up to 3 x 22 A
Frequency range	50 - 400 Hz
Temperature class	T40/E and T40/B %



*Special voltages and higher powers on request